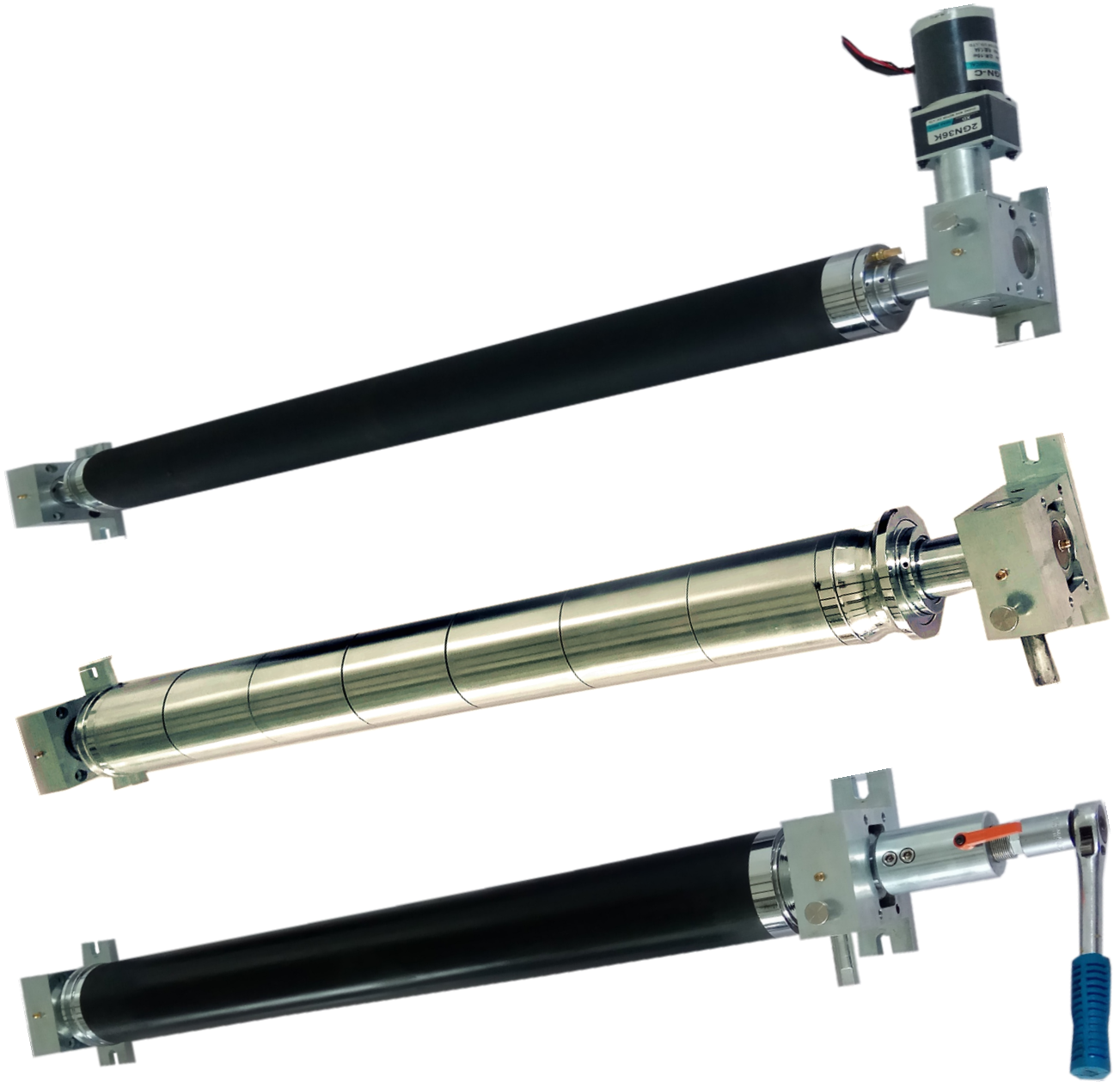




达科弧形辊 DNK Spreader rollers

邯郸达南科机械科技有限公司

HanDan DNK MECHANICAL SCIENCE AND TECHNOLOGY CO.,LTD



立己达人 共创三赢

DNK, Cooperate to achieve a win-win-win situation



邯郸达南科机械科技有限公司

HANDAN DNK MECHANICAL SCIENCE AND TECHNOLOGY DEVELOPMENT CO.,LTD.

邯郸达南科公司一直致力于展平辊的研发和维修，其产品质量优异，品种齐全，尤其在高速应用中仍能保持性能稳定可靠。达科展平辊广泛应用于薄膜、锡箔、纺织和造纸等多个行业。

We are dedicated to research and development spreader rollers. We have rich experience on maintenance as well. The products have high quality ,especially on high speed operating also have the reliable performance. DNK spreader rollers are suitable for all applications in the textile, tinfoil, paper and plastic industry.

我们的核心团队拥有丰富的弧形辊研发和维修经验，70%的团队拥有国际著名辊子服务公司工作经验，服务过的著名品牌有德国西科、美国MountHope、日本KSK、意大利Tecnomec3等国际著名弧形辊品牌。

70% of our core team members have the experience of repairing the international famous brands. like Kickert, MountHope, KSK and Tecnomec3.

我们公司的愿景：让中国的机器以中国配件为荣。

Our vision: Make Chinese equipment be proud of Chinese machine parts.

- 表面包胶弧形辊
- 金属面弧形辊
- 中高可调弧形辊
- 根据客户需求订做

- Curved spreader rolls rubber covering.
- Curved metal spreader rolls
- Adjustable bow curved spreader rolls
- Special designs to customer' requirement

弧形辊简介

弧形心芯轴上通过安装一系列可旋转的弧形辊面，来达到展平作用。

通常外表上看，弧形辊是固定的，橡胶套是可旋转的，弧形展平辊用于塑料薄膜、纸、纺织品及类似的加工设备上，或者有时也用于其他导辊无法安装的位置上。

弧形辊安装

正确的安装方法可使弧形辊达到最佳的展平效果 (Fig1)，基材通过弧形辊的凹面，通常要有较长的导入距离 -A- 和较短的导出距离 -E-，距离 -A- 通常是距离 -E- 的 2 倍左右，尺寸 -E- 要接近 2 倍或 2.5 倍弧形辊的直径。

提示：安装弧形辊时，请确保弯辊和基材是对齐和垂直水平的 (Fig2)

Abb. 1

Fig. 1

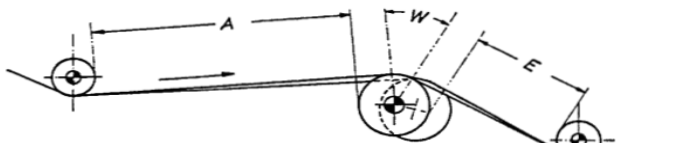
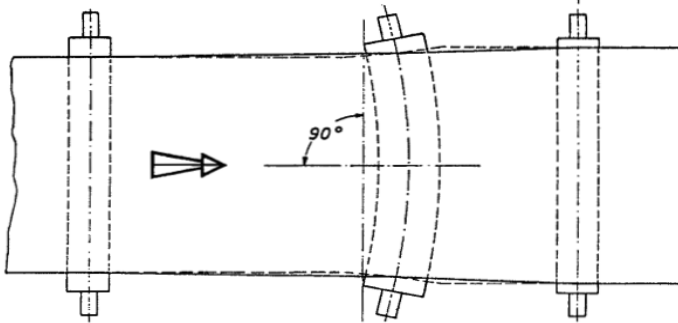


Fig. 2



弧形辊包角

包角W根据不同的卷材要进行适时地调整，下面根据不同的卷材推荐的包角角度。

纸行业：成形网 25-20° 湿毛毡 30-60° 纸/板 15-30°。

薄膜和锡箔：PA和PP膜 1-6微米 60-90°、8-20微米45-60°

20微米以上45°、静电膜 15-20°。

纺织行业：普通织物 45-60° 延展布 60-90°。

Spreader rolls

The spreading effect of the curved rolls is obtained through the curved steel shaft onto which rotate some rolls mounted on ball bearings.

Externally onto the rolls is fitted, as a rule, a rubber sleeve which is free to rotate. The curved spreader rolls is used for plastic films, paper, fabrics and similar products, or any time the installation of other types of roll is impossible.

Installation

Optimum effect will be achieved by mounting the spreader roll as shown in Diagram 1(Fig.1).

Long entry distance -A- short output distance -E- The material web should always pass over the concave side of the Bowed Roller.

Dimension "A" should always be twice the exit span "E". Dimension "E" should be approximately two and a half times of the Bowed Roller.

Note: When install the Bowed Roller please ensure that it is aligned both vertically and horizontally onto the material web As shown in diagram1(Fig2)

Wrapping Angle

The wrapping angle "W" is determined by the type of material being processed.

The following angles of wrap are recommended:

Paper industry

forming fabrics 25-20° ;

Wet felts 30-60° ;

Paper/board 15-30° ;

Film and Foil industry

Films PP and PA

1-6 Micron 60-90° ;

8-20 Micron 45-60° ;

More than 20 45° ;

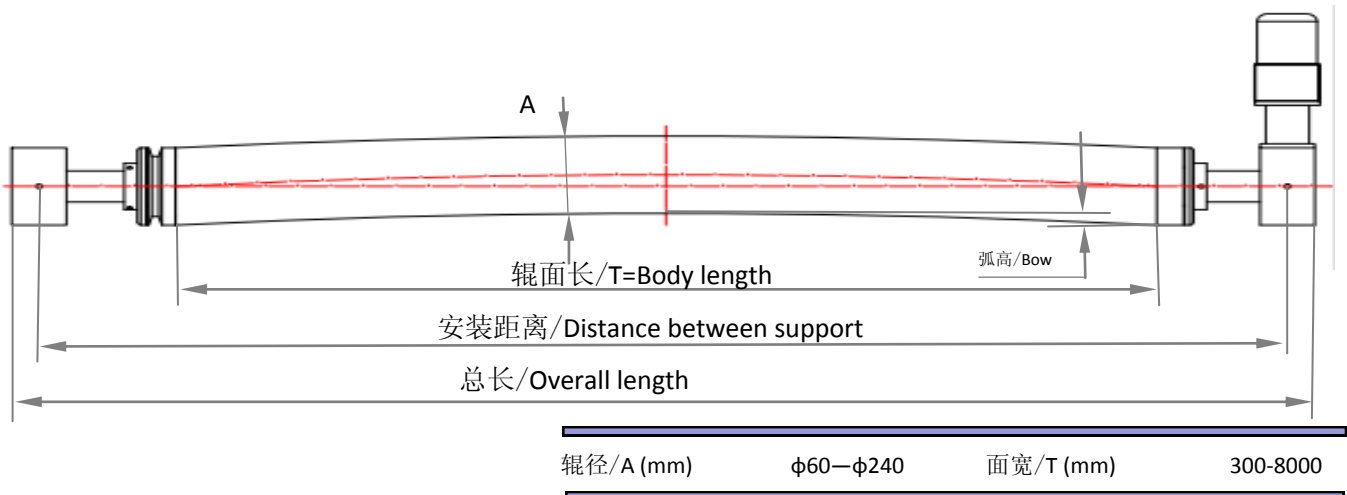
Metalised films 15-20° ;

Textile industry

General 45-60° ;

Extensible fabrics 60-90°

R系列弧形辊 / Series R rolls



1. 该弧形辊弧高不变，是最为广泛使用的类型。
2. 根据客户的应用环境，我们可提供不同的橡胶材质，辊面可进行凹槽加工，加特氟龙套等。
3. 该弧形辊广泛使用于薄膜、纸张、金属箔、纤维等材料。
4. 比起直线展平辊，展平效果更稳定。

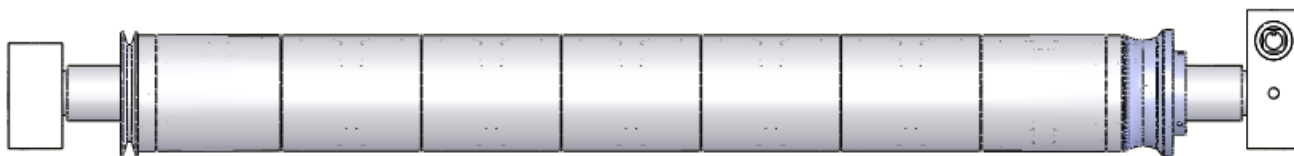


1. This model of spreader rolls are widely used ,whose bow are fixed.
2. We can supply different kinds of rubber sleeves to suit customer's application environment. The face of the rubber can be processed in special way ,such as cover grooving , teflon.
3. This series of rolls is used many materials:
Plastic films、 paper、 foil、 fabric and so on.
4. Compare to straight-line spreader rolls, this series roll has more stable spreading effect.



金属面弧形辊/ Spreader rolls with metal surface

M系列/M series



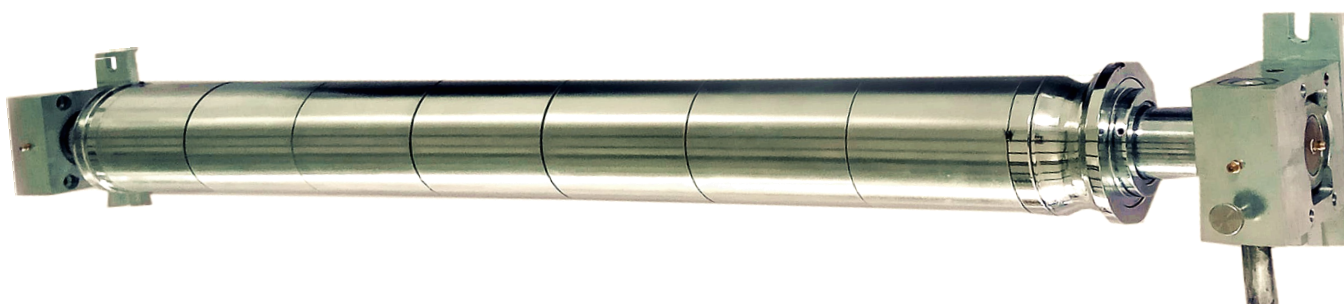
辊径/Dia (mm)	φ60—φ240
面宽/Face length (mm)	300—8000

特色:

- 1.优秀的耐高温能力，耐磨能力，防粘易清洁；
- 2.最高车速可达2000m/min；
- 3.可进行各种表面处理，例如喷砂、电镀、凹槽加工及特殊要求；
- 4.适用场合：分切机、复卷机、涂布机、纸机。

Feature:

- 1.Better high temperature resistance, abrasion proof, anti-adhesive, and easy to clean.
- 2.The highest speed:2000m/min.
- 3.Different surface processing methods, such as Sand-blasting、Chrome plated、cover grooving. Special executions upon request.
- 4.Suitable machine: Cutter machine、Re-reeling machine、coating machine and paper machine.



机械可调弧形辊/Mechanical adjustable spreader rolls

V 系列弧形辊/series rolls



通过棘轮扳手调整弧高，导辊直径 $\leq 130\text{mm}$ 。



V系列可变弧度展平辊可采用橡胶面和金属面，允许客户在设备工作过程中调整中高，以提高展平质量或分切质量。

弯曲量可从0mm开始调整，0mm时可用做导辊。



V Series adjustable spreader roll with rubber coating or metal sector allows the operator to change the roll bow while the machine is working, depending on the material to be processed, and improve the cut separation.

The bow can be adjusted from 0 mm, and can be used as a guide roll when the bow is 0 mm.



更多型号/ More Types

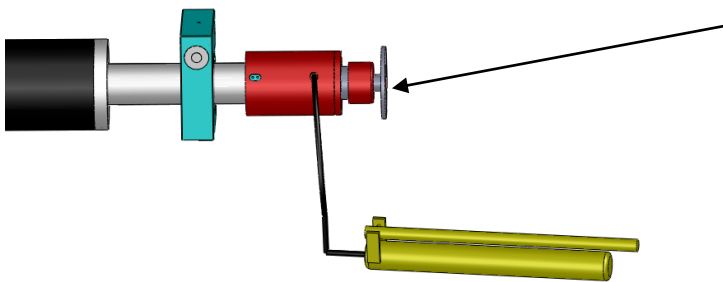
液压可调弧形辊/Bow adjustment through hydraulic pump



- 1.通过液压泵来调节弧高，弧度更加精确，稳定好。
- 2.同一台机器可以适应不同的材料。
- 3.独特的自锁功能，弧高调节合适后可把液压泵移除，节省空间。
- 4.直径小于等于175mm。



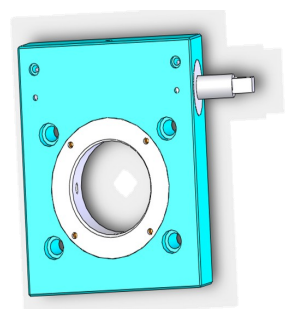
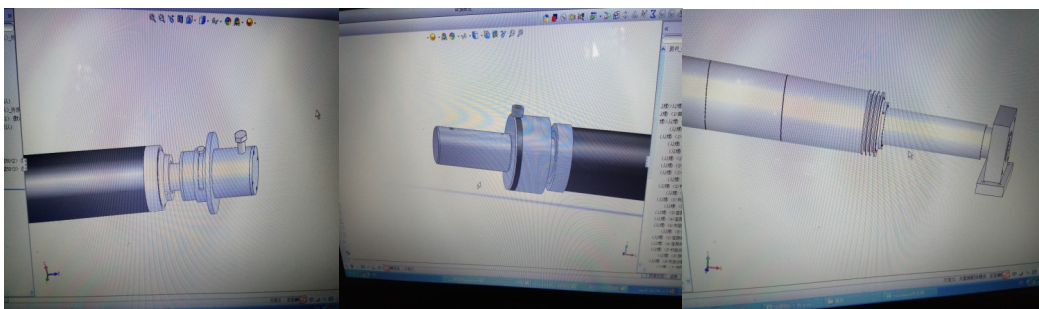
- 1.Bow adjustment through hydraulic pump ,The bow become more accurate and stable.
- 2.Different material can be used in the same machine.
- 3.The Unique self-locking function ,you take the pump off when the bow is suitable. It can save space.
- 4.roller diameters \leq 170mm.



自锁手轮，弧高调节合适后锁住手轮，然后拿掉液压泵。

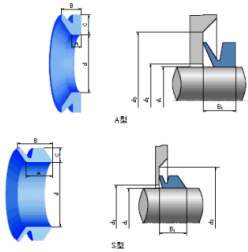
Self-locking hand wheel, lock the hand wheel after the bow get suitable, then move off the hydraulic pump.

我们可以做的更好/We can do better



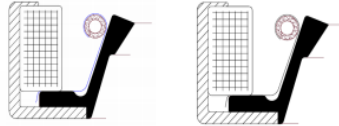
密封系统和维修经验

Sealing System And Maintenance Experience

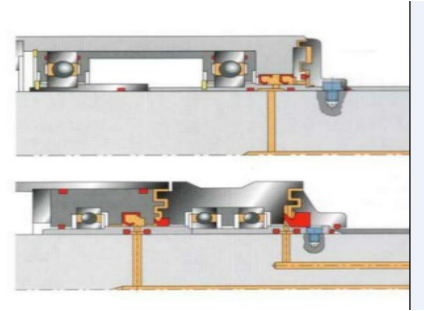


V型密封圈/V-rings

Sealing System L2M or L2M-PL



旋转油封/Rotary shaft oil seal



轴端油封/Head oil seal

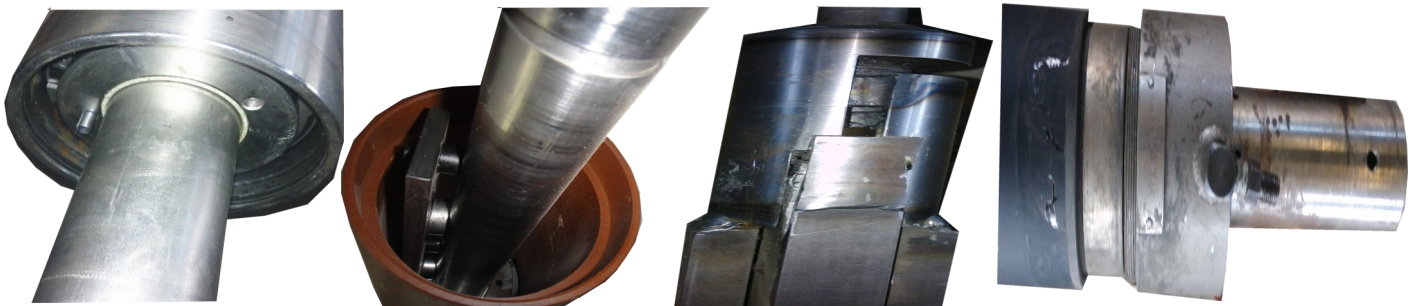
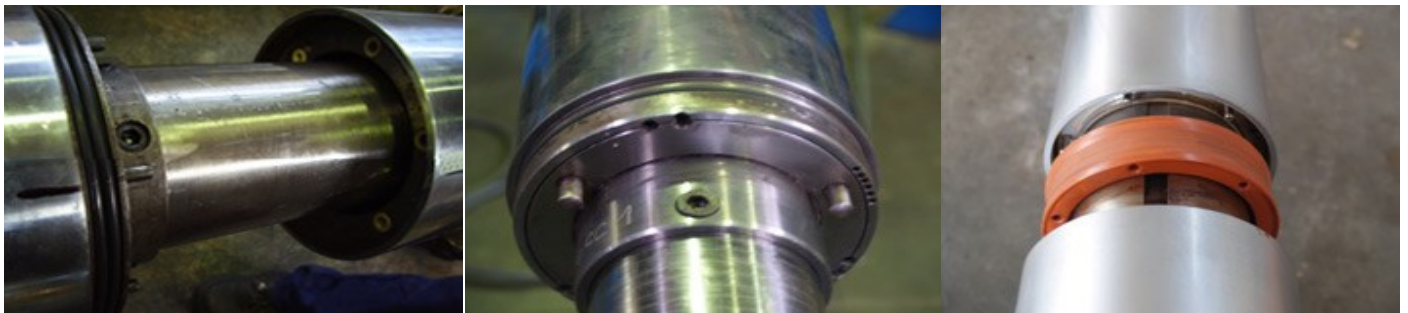
润滑剂/Lubricants

不同位置的弧形辊要选择不同种类的润滑脂

Different lubricants to match different operating conditions



不同结构弧形辊/Different Types Bowed Rolls



橡胶套的选择

不同车速的弧形辊需要配备不同结构的橡胶套，胶套的骨架材质不同。

机器车速：

$V < 400\text{m/min}$ 普通夹线胶套；

$400 < V < 600\text{m/min}$ 夹布胶套；

$600 < V < 1000\text{m/min}$ 夹钢丝胶套；

橡胶套弧形辊可用于潮湿低温的环境。

当车速大于 1000m/min ，温度高于 120°C 时可选用金属面弧形辊。

通常的橡胶套种类有丁晴橡胶、三元乙丙胶和硅胶，也可根据客户要求定做。

胶套生产过程

The process of sleeves making

Rubber Sleeves

Rubber sleeves selection depends on the speed of the machine.

Machine speed:

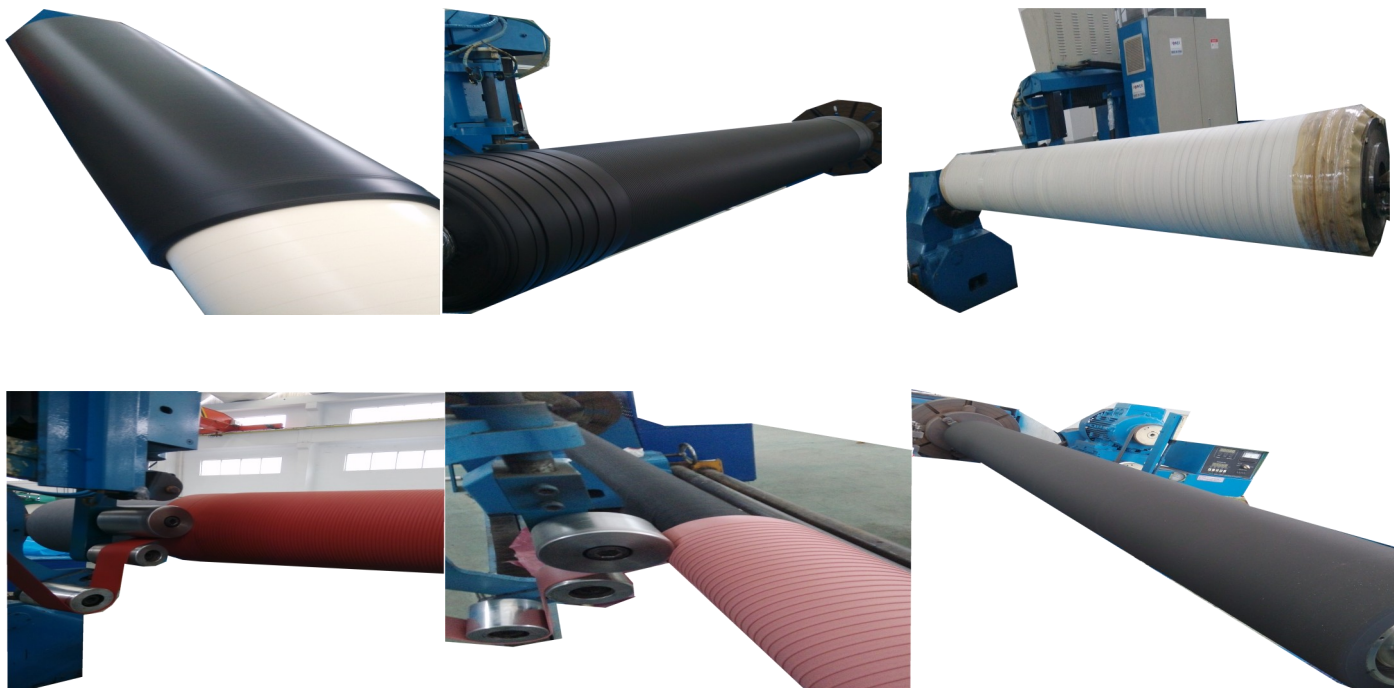
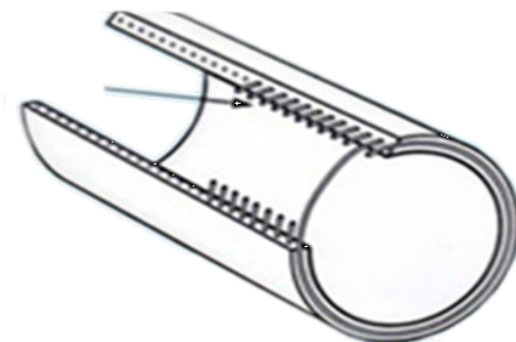
$V < 400\text{m/min}$ simple sleeve with wire reinforcement;

$400 < V < 600\text{m/min}$ sleeve with textile reinforcement;

$600 < V < 1000\text{m/min}$ sleeve with metal reinforcement;

Rubber spreader rollers are suitable for wet and low temperature environment. When machine speed $> 1000\text{m/min}$, temperature $> 120^\circ\text{C}$ the rollers with metal segment are better.

We usually supply three types rubber :NBR、EPDM and Silicon . Special designs to customer' requirement.

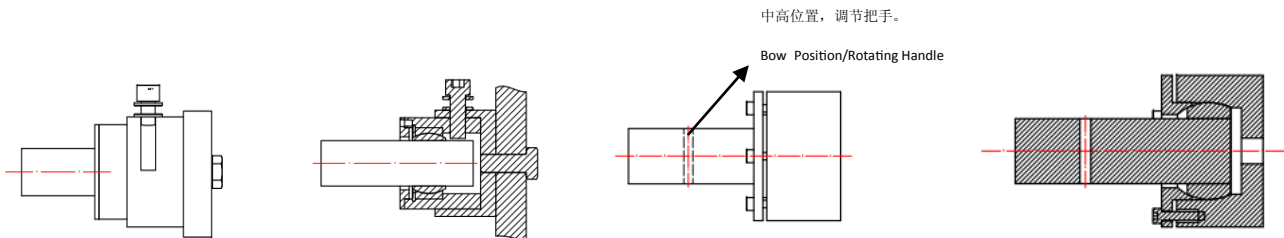


旋转支撑座/rotating supports

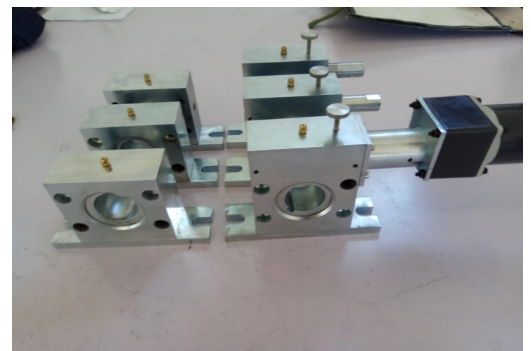
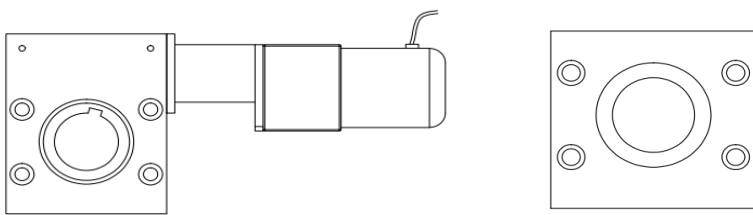
简易支撑座/Simple Supports

这种支撑座操作简单，节省安装空间。适用于直径120mm以下的弧形辊。

This kind of supports easy to operate and save installation space. They are suitable for the spreader rolls whose diameter under 120mm.



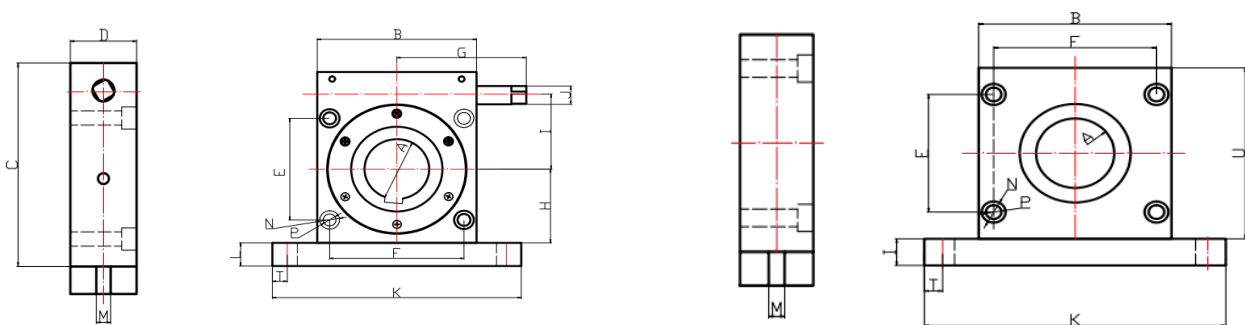
电机驱动支撑座/Motor drive supports



这类支撑座主要用于镀铝膜机和分切机，调节方便，用于干燥环境。

This supports is particularly used for Aluminum film machine、cutter machine . Easy to adjust and used in dry environment.

S系列支撑座/S-series supports



单位/Unit : mm

型号/Type	A	B	C	D	E	F	G	H	I	J	K	L	M	Φ N	Φ P	T	U
S30	30	80	84	35	30	60	80	30	34	10	140	12	11	13	7	15	60
S40	40/50	100	125	50	45	80	100	40	45	12	165	15	13	15	9	15	80
S60	60	120	140	50	60	95	120	55	57	14	200	20	17	17	11	20	110
S75	75	160	185	60	110	135	140	80	80	14	250	25	19	19	13	20	160
S90	90	195	237.5	70	140	160	150	97.5	104	19	300	25	21	21	15	25	195
S105	105	220	265	78	150	175	175	110	116	19	350	30	21	23	17	32.5	220

弧形辊选型表

Application Information/Request for Quotation

用户名称/Company:	联系人/Contact:
电话/Phone:	电子邮件/Email:

辊面总长= 工作面 + 50mm

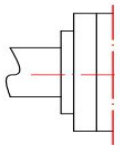
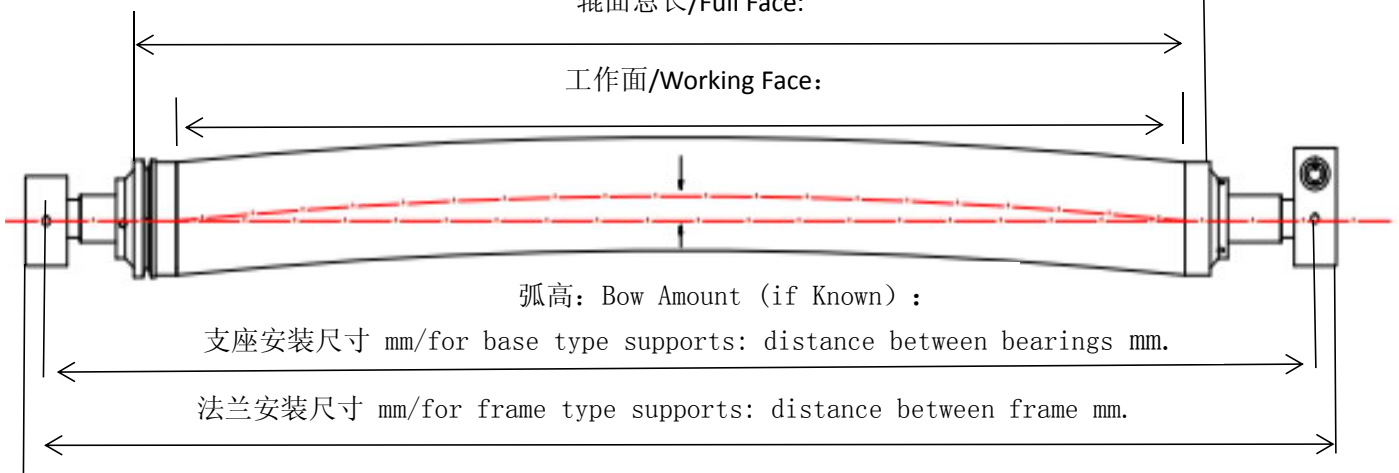
Full Face = Working Face+ 50mm

工作面长度= 基材最大宽度+50mm

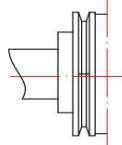
Working Face=Max Web Width +50mm

辊面总长/Full Face:

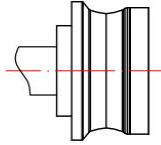
工作面/Working Face:



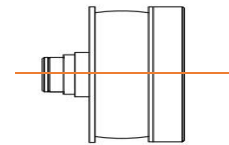
标准型
standard



V型带轮
Sheave for V belt



固定绳轮
Sheave for rope fixed/idle



平带轮
Sheave flat belt

辊子简介 ROLL SPECIFICATIONS

参数要求 REQUIRED PARAMETERS

辊子类型/Spreader type 固定弧高/ fixed bow 可调弧高/variable bow

支撑/Support 轴座式安装/base type 法兰式安装/flange type

固定支座/ fixed incidence 可调支座/variable incidence

表面类型/Spreader covering 橡胶面/rubber 金属面/metal 特氟龙面/teflon

工作环境/Working environment 潮湿环境/ wet application 干燥环境/dry application

设备类型/Type of machine..... 安装位置/Roller position.....

卷材车速/Web speedm/min. 最高速度/max..... 平均值/average.....

卷材张力/ Web tension.....kg/cm. 最大张力/max..... 平均值/average.....

卷材最大宽度/ Max web width.....

辊子直径/Roll diameter.....

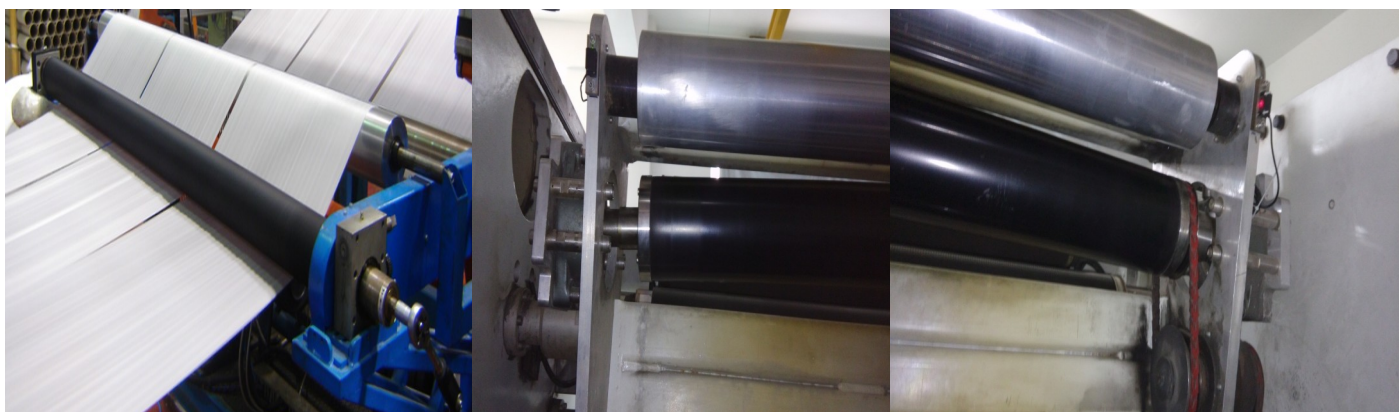
现场化学(浓度) /Presence of chemicals(concentration).....

材料类型/Web material 纸/paper 纤维/fabric 箔/felt

塑料薄膜/plastic film 塑料织物/plastic cloth

备注/Notes.....

日期/Date..... 填表人/Filled in by.....



我们没有什么行业秘密，有的只是对细节的追求和对产品的敬畏之心。欢迎和我们交流与探讨。

There is no secret in spreading industry, we only have the pursuing for detail and the reverence for our products. Welcome to make a communication and discussion with us.

邯郸达南科机械科技有限公司

HanDan DNK mechanical science and technology co.,ltd.

地址：河北省邯郸市高新技术开发区

Add: High Technology and development district at Han Dan ,Hebei Province

电话/Tel: 0310-6097251

传真/FAX: 0310-6097251

手机/Phone: 18231031034 17752958591

邮箱/E-mail: dnkroller@126.com

网址/Web: www.hddnk.com

本公司保留对产品外观、尺寸及技术改进的权利，如有变动恕不另行通知。

Our company holds the right to improve the appearance ,dimension and technology of the products without prior note.
